

## Features

- FREEZES WITHOUT ICE: -4° F(-20°C) to 68° F(20°C) powerful chilling performance.
- CAR BATTERY PROTECTION: With temperature memory function and Three stages battery protection system prevents vehicle running out of battery.
- Details: Built-in LED light, interior wine battle holder and optional wire storage basket. Heavy-duty handle, digital display, door with cup holder design, protective foot pad, optional APP control.
- High performance compressor: Quality compressor offers superior cooling performance.
- Fit anywhere: Car/Jeep/Truck/Home/Dorm/Cottage/Garage/RV/Boat/Outdoor (DC/AC).
- Rugged design: Shockproof and durable for handling rocky road. Safe to run less than a 45-degree angle for a short time.
- Quiet operation: Less than 45db, like living in quiet suburb.
- ENERGY SAVING (MAX & ECO MODE): Two different modes can be adjusted as needed. MAX mode for fast cooling or ECO mode for energy saving.

<b>MODEL:</b>	SECCF55
<b>TOTAL CAPACITY:</b>	49.4L/52Quarts/1.7 4Cu. Ft.
<b>POWER SUPPLY:</b>	12/24V DC 100~240V AC
<b>RATED CURRENT:</b>	DC 5.0A/2.5A AC 1.2A-0.5A
<b>RATED POWER INPUT:</b>	60W
<b>FRIDGE DIMENSION(MM) (L X W X H INCH):</b>	690*346*524mm 27 3/16*13 5/8*20 5/8inch
<b>PACKING SIZE(MM) (L X W X H INCH):</b>	708*398*599mm 27 7/8 * 15 43/64 * 23 37/64 inch
<b>NET WEIGHT:</b>	13.8kg/30.4lbs
<b>GROSS WEIGHT:</b>	16.7kg/36.82lbs
<b>FRIDGE/FREEZER (COMBINATION):</b>	-20~20°C(-4~68°F)
<b>FCL QUANTITY:</b>	138/288/384 (20/40/40'HQ)
<b>NOISE LEVEL:</b>	<45dB

\*Due to product improvement, the technical information might be different from actual information, please refer to the rating label on the product. (Note:±3°C temperature difference is permitted)



Door latch



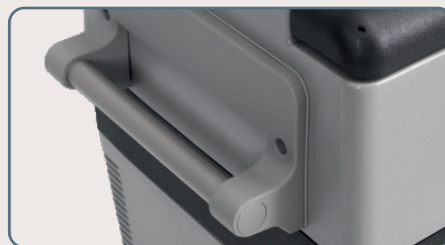
Digital display(°C/°F)



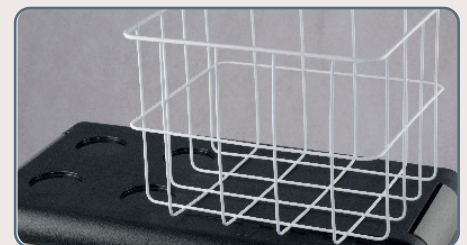
Interior light



Functional top



Heavy duty handle



Wire storage basket



AC/DC dual use



Protective foot pad



Fridge/freezer dual zone